

4 BEDROOM VILLA

DETAILS

Saleable Area: 4983 sq.ft. - 4998 sq.ft.

Available Types: 3

Building Configuration: Ground + 1

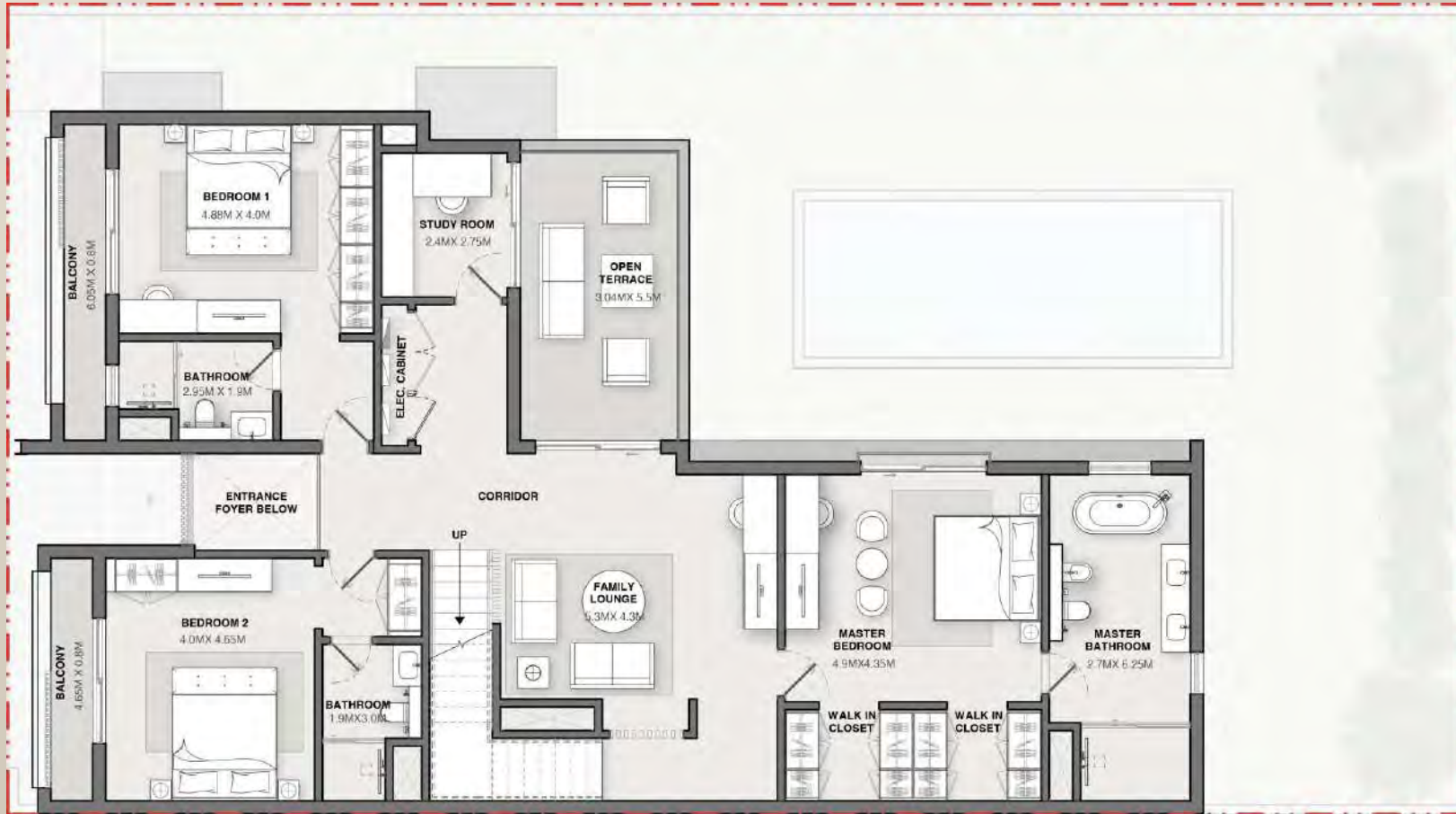
-
- Villa with private garden
 - Private Swimming Pool
 - Living spaces overlook the Pool Area and garden beyond
 - Direct easy access to the forest
 - 2 Covered Car Parks
 - Separate Maid's Rooms
 - Master Bedroom with luxury walk-in Wardrobe, and spacious Bathroom
 - Open Terrace Area over-looking the pool



4 BEDROOM TYPE A



4 A GROUND FLOOR



4 A FIRST FLOOR



4 A TERRACE